



Orphiescaph



Unmatched visibility distance, in real time,
that saves you time and money.

Orphiescaph

The best camera for divers



x3 visibility distance



Real time processing



Low latency



Lightweight and compact

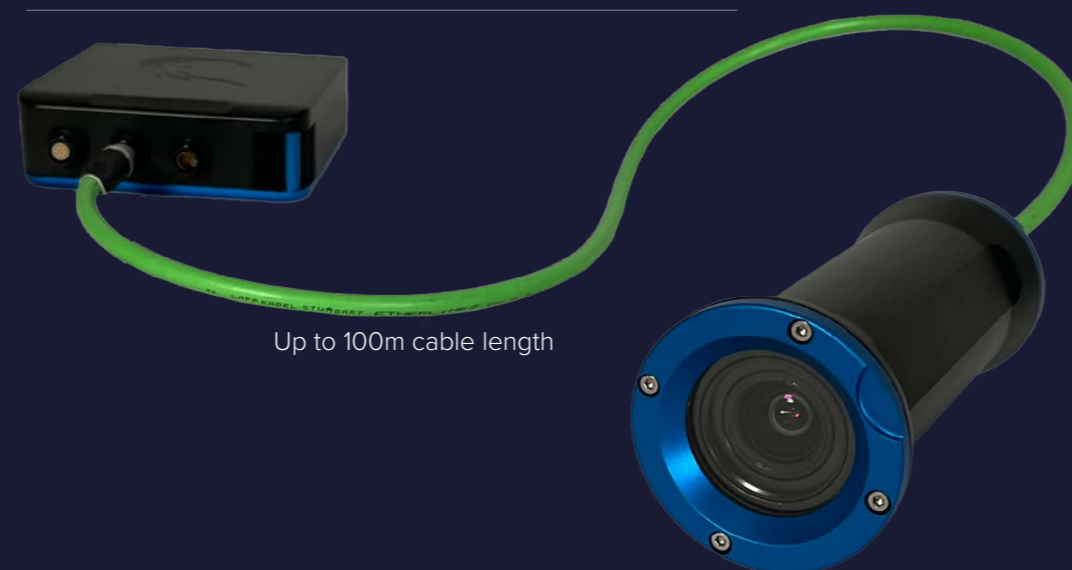
Technical specifications

Orphiescaph camera

Sensor	2/3" CMOS color sensor
Optical resolution	1080p
Frame rate	20 fps
Latency	~150ms
FOV	Air : 86°(D) / 75°(H) / 58°(V) Water : 62°(D) / 54°(H) / 40°(V)
Lens material	Tempered Borofloat
Housing material	Hard anodized aluminium
Dimensions (without connector)	L=163mm ; ø=72mm
Weight (air/water)	750g/165g
Connector	Aquamouse Glenair

Orphiescaph processing box

Dimensions (without connector)	L=136mm ; W=136mm ; H=44mm
Weight (air)	~990g
Housing material	Hard anodized aluminium
Power requirements	12-24V
Input	Audio IN
Output	HDMI, Ethernet



Up to 100m cable length

Orphiescaph cable

100m cable (other lengths on demand)

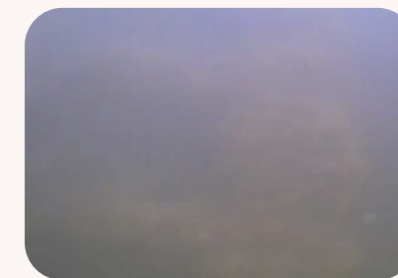
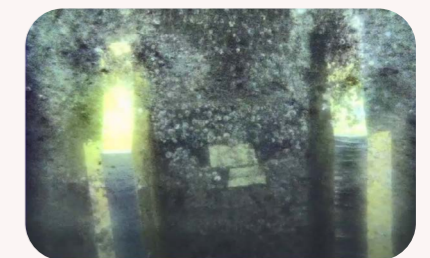


→ Other options and configurations on demand



Standard camera

Orphie camera



«For the surveyor, it's impressive because you can see much more than the diver could see»

Operation supervisor



Orpheo

Custom software for Orphie cameras

All camera parameters configurable from a single software
→ User friendly

Other additional features
→ Digital zoom, snapshot, record...

About the company

For 45 years, i2S has been the expert in high-quality image capture and processing, applied to most complex and challenging imaging projects in various fields, but also growing a unique know-how to become the leader in subsea imaging technology that became a dedicated business unit called Orphie.